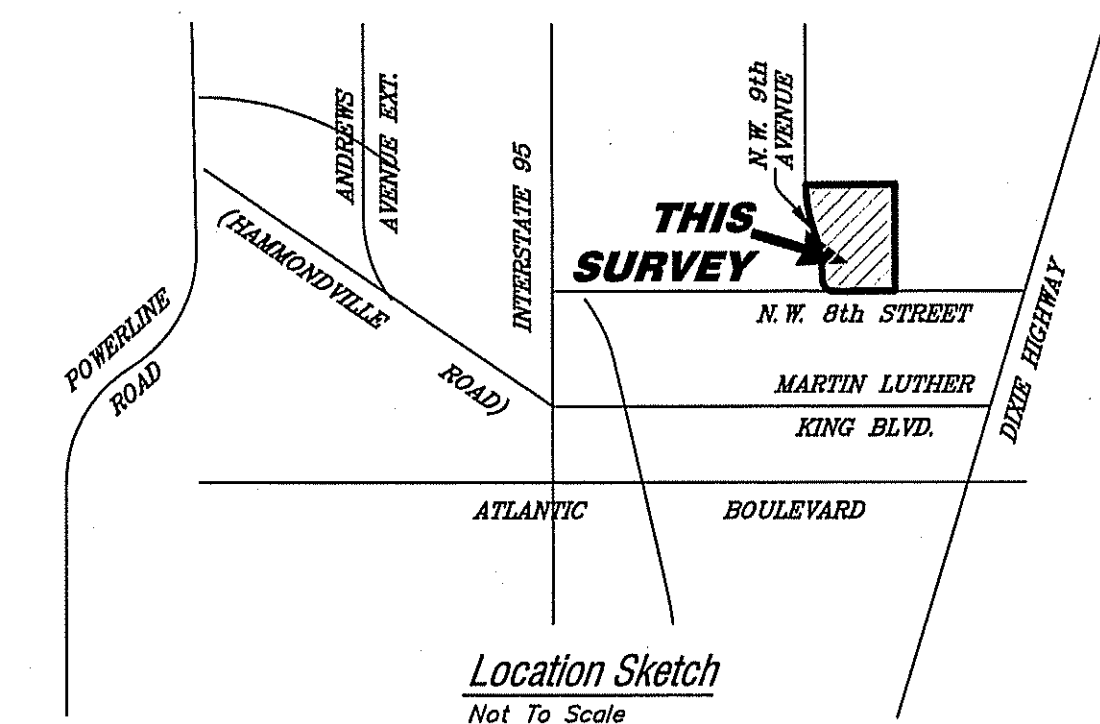


RECORD LAND SURVEY
Lots 1A, 1B, 2A, 2B, 3A, 3B, 4A and 4B,
Block 1, ANNIE LAURIE COURTS,
P.B. 72, PG. 13, B.C.R.

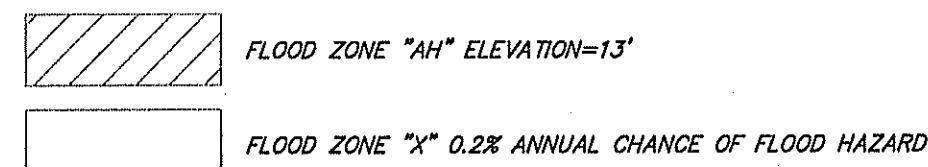


Legal Description

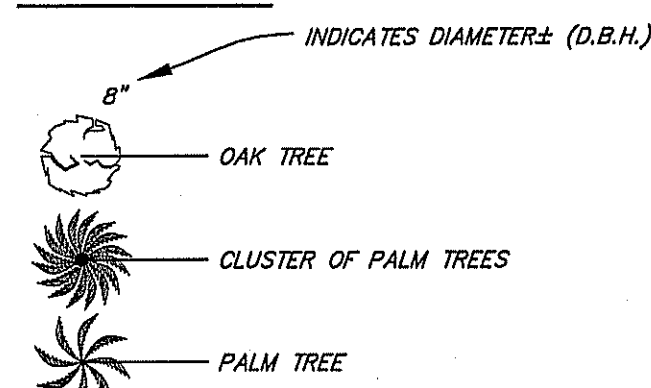
Lots 1A, 1B, 2A, 2B, 3A, 3B, 4A and 4B, Block 1, ANNIE LAURIE COURTS, according to the plat thereof, as recorded in Plat Book 72, Page 13, of the public records of Broward County, Florida.

Said lands situate, lying and being in the City of Pompano Beach, Broward County, Florida and containing 34,667 square feet or 0.7958 acres, more or less.

FLOOD ZONE HATCH LEGEND



TREE SYMBOLS



NOTES:

- 1) This survey reflects all easements and rights-of-way, as shown on above referenced record plat(s). The subject property was not abstracted for other easements road reservations or rights-of-way of record by McLaughlin Engineering Company.
- 2) Underground improvements if any not located.
- 3) This drawing is not valid unless sealed with an authorised surveyor seal.
- 4) Boundary survey information does not infer Title or Ownership.
- 5) Reference Bench Mark: Broward County Engineering Department, Bench Mark #0693, Elevation= 12.610 (NGVD29) converted to 11.21 (NAVD88).
- 6) Elevations shown refer to North American Vertical Datum (1988), and are indicated thus: g^{N} , Elev. = 6.59
- 7) This property lies in Flood Zones "AH", Elev.=13.0 and "X". 0.2% Annual Chance of Flood Hazard Per Flood Insurance Rate Map No. 12011C03357 H, Dated: August 16, 2014. Community Panel No. 120205.
- 8) Underground Utility locations shown hereon, if any, are based upon point marks on the ground provided by others. McLaughlin Engineering Company did not confirm the accuracy of this data. The exact location of all utilities should be confirmed prior to design or construction.
- 9) Bearings shown hereon refer to record plot (72/73) and assume the North Right-of-way line of N.W. 6th Street as South 87°58'16" West.
- 10) Elevations per North American Vertical Datum (1988) derived from National Geodetic Vertical Datum (1929) and certified using U.S. Army Corps of Engineers software (Corcoson 6.0.1) obtained from <http://www.tech.army.mil/>

OFFICE NOTES

FIELD BOOK NO. EFB, Print, LB# 281/32

JOB ORDER NO. V-4480

CHECKED BY: _____

DRAWN BY: RDR

FILE NO: 19-3-

LEGEND

A	= CENTRAL ANGLE (DELTA)	ELEV. OR EL.	= ELEVATION
R	= RADIUS	O/S	= OFFSET
A OR L	= ARC LENGTH	A/C	= AIR CONDITIONING
CHRG	= CHORD BEARING	C	= CENTRELINE
CH	= CHORD	Z	= MORE AND LESS
CHD	= CHORD	F.P.L.	= FLORIDA POWER AND LIGHT CO.
TANL.BRG	= TANGENT BEARING	S.B.T.	= SOUTHERN BELL TELEPHONE
P.O.C.	= POINT OF COMMENCEMENT	B.R.C.	= BROWNS BOUND RECORDS
P.O.B.	= POINT OF BEGINNING	M.B.R.	= MIAMI DAILY BUSINESS RECORDS
W/MCL CAP	= WITH MC LAUGHLIN ENGINEERING CO. CAP	P.B.R.	= PALM BEACH COUNTY RECORDS
P.M.	= PERMANENT REFERENCE MONUMENT	O.R.	= OFFICIAL RECORDS BOOK
CONC.	= CONCRETE	P.B.	= PLAT BOOK
C.B.S.	= CONCRETE, BLOCK AND STUCCO	G.C.	= POINT OF CURVE
R.I.C.V.	= RIGIDITY CONTROL VALVE	R/W	= RIGHT-OF-WAY
DIA.	= DIAMETER	C.O.	= CLEAN OUT
W.M.	= WATER METER	H.H.	= HAND HOLE
W.V.	= WATER VALVE	C.L.P.	= CHAIN LINK FENCE
W.L.P.	= WOOD STREET LIGHT POLE	C.L.P.	= CONCRETE LIGHT POLE
W.P.P.	= WOOD POWER POLE	W/F	= WET FACE OF BULKHEAD
B.F.C.	= BACK FLOW PREVENTOR	O/W	= OVERHEAD UTILITY LINES
ELEC.	= ELECTRIC	W/W.C.	= WITH WITNESS CAP
S.	= SEWER	C.O.	= COMPANY
S.V.	= SEWER VALVE	N.O.	= NO
FEET	= FEET	INV.	= INVERT
L.B.	= LICENSE BUSINESS	M.E.S.	= MEASURE
F.H.	= FIRE HYDRANT	MISC.	= MISCELLANEOUS
D.B.M.	= DIAMETER AT BREAST HEIGHT	P.C.T.	= POLLUTION CONTROL DEVICE
NAVDB88	= NATIONAL AMERICAN VERTICAL DATUM (1988)	NGV29	= NATIONAL GEODETIC VERTICAL DATUM (1929)

CERTIFICATION

We hereby certify that this survey meets the "Standards of Practice" as set forth by the Florida Board of Professional Surveyors and Mappers in Chapter 5J-17.05 Florida Administrative Code, pursuant to Section 472.027, Florida Statutes.

Dated at Fort Lauderdale, Florida, this 8th day of July, 2019.

McLAUGHLIN ENGINEERING COMPANY

SCOTT A. McUGHLIN
Professional Surveyor & Mapper No. 58
State of Florida.

PZ21-12000005
7/7/2021